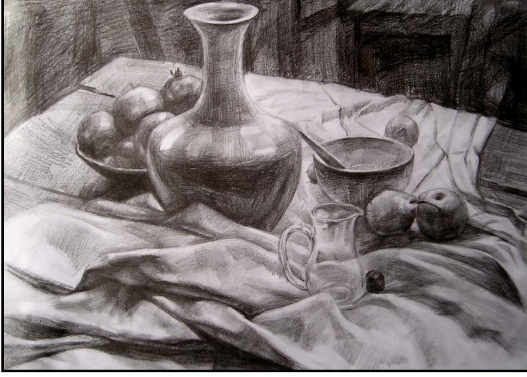


WORK SAMPLE JASMINE ZHOU

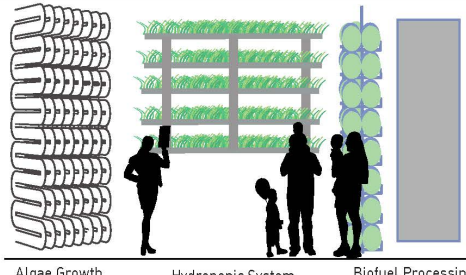
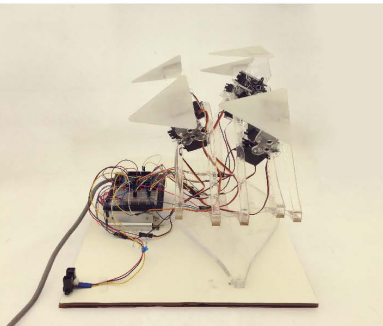
HAND RENDERINGS



URBAN ORGANIC COLONY

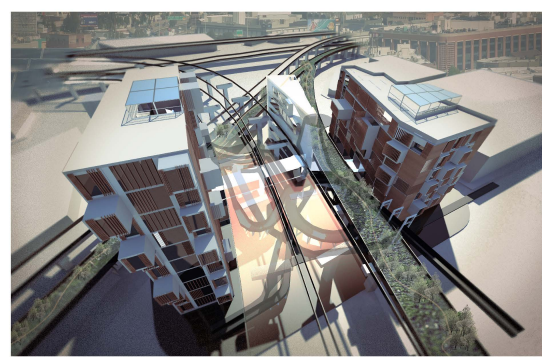
Academic Experience - Corporate with Ivonne and Sirada

This design concept is based on the car culture together with the idea of urban farming in LA. The new station becomes a prototype of the existing gas stations, it transforms algae and soybean to organic oil which can be used for cars and distributes seeds to the city vacant roofs forming a new urban territory.



The station itself presents not only a technical machine, but provides a nice social place for education as well.

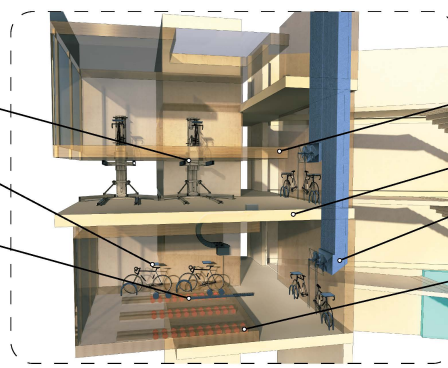




"Genie Tower" lift
Modified for bicycle.

Bicycle work-
station

Geared track to
Push and Pull
Drawer spaces



Lift-able spaces

C.L.T. Floorplate

Bicycle assisted
Stack Ventilation

Rolling track to
reduce friction

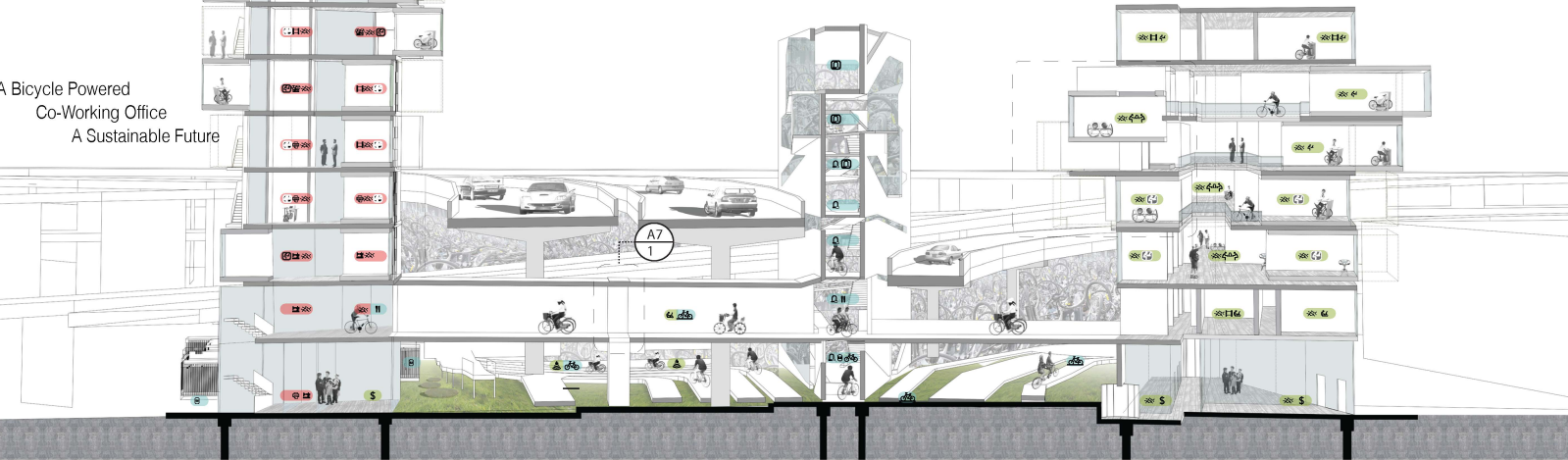
CRITICAL OFFICE

Academic Experience
-Corporate with Colin Decker



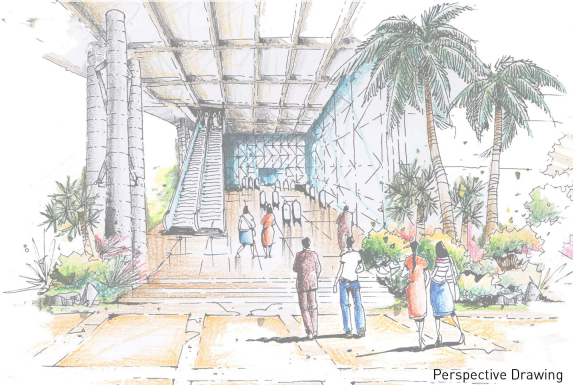
In a society dominated by the personal automobile there exists many groups that would take back our street as public space, they organize rides, rallies, festivals, and political action, ten years ago these groups were isolated and idealist. Today however these groups have grown into a very real political force, their message stretches globally, their tactics are rebellious, and their time is now, this is our architecture.

A Bicycle Powered
Co-Working Office
A Sustainable Future



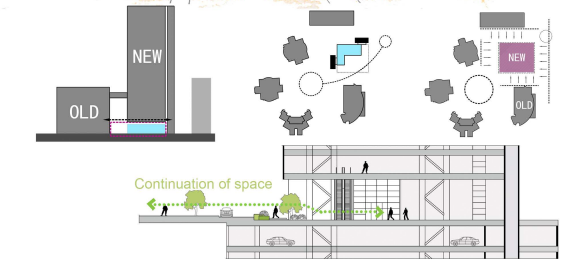
SZ CABLE TV HUB OFFICE TOWER

Professional Experience - Corporate in team at HK HuaYi Design

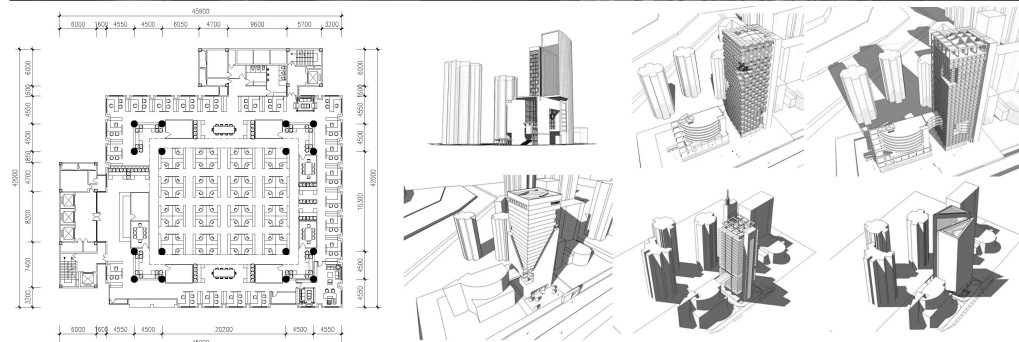
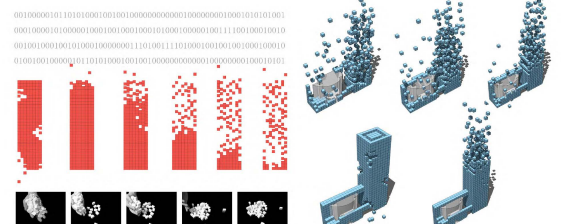


Perspective Drawing

This project designed as the symbol of the digital age, the display of the corporate culture and the carrier of the information.



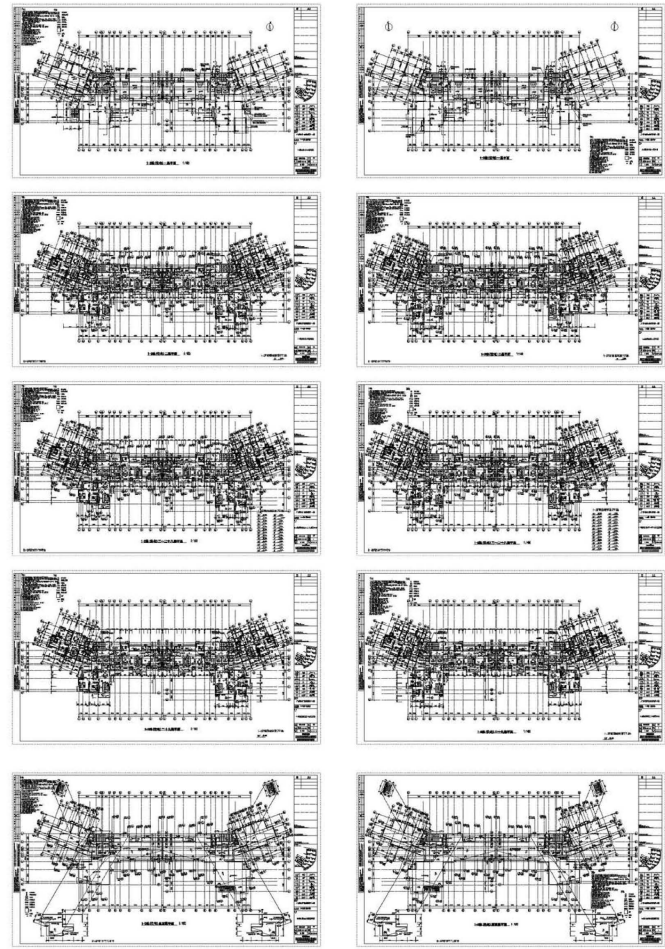
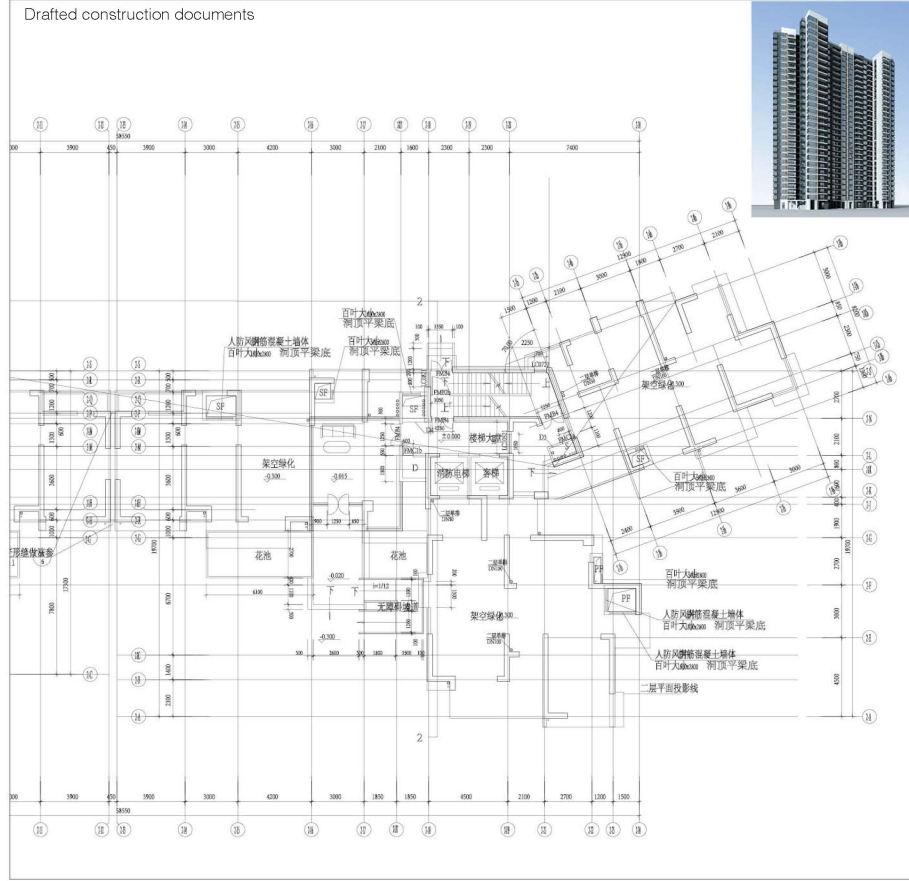
The misalignment in the magic cubes forms various interesting spaces, which serve as the windows for the transmit of the information between internal and external space.



DONGJING RESIDENTIAL DISTRICT PLANNING 东镜住宅设计

Professional Experience - Corporate in team at HK HuaYi Design

Drafted construction documents



PLANNING FOR WUHAN SANJIANG PANLONG PROGRAM 武汉三江盘龙规划设计

Professional Experience - Corporate in team at HK HuaYi Design



- Built sketch-up models for townhouses
- Drafted floor plans for townhouses
- Conducted site analysis